

Communal Security doors and Screens

The Aluminium Integrity System



Scope

The Aluminium Integrity Range of Communal Security Doors (CSD) has been designed to provide high security entrances for multiple occupancy dwellings. A unique feature of the system is its use of Soundcrafts curtain walling profiles for the frames and screens. This gives the option for a single door as well as a door within a curtain walling screen. Features Include:

- Open in and open out.
- Electromagnetic locking, up to 1660LB holding force per magnet.
- Thermally Broken or Solid aluminium profile option.
- Double and single glazing options, with both available fully glazed.
- Aluminium or Hybrid frame options as a single door or curtain wall.
- Part M compliant
- PAS24 and Secure By Design (SBD).
- Anti-Finger trap stiles (AFT).
- Continuous hinge option (CH).

Materials

- All aluminium sections are extruded using Aluminium Alloy 6060 or 6063 T6 to BS EN 755 part 9 2008.
- Polyamide thermal barriers are manufactured in accordance with PA66 GF25.
- Gaskets are manufactured in accordance with BS3734.
- Timber Profiles are certified by MPA Stuttgart with quality class BS1100, laminated according to DIN1502 using weather proof and heat proof melamine glue; humidity 12% +/- 2%; only lamellas without fault are laminated. Finger joints in outer layer min 500mm centres. PEFC /04-32-0042 certified. Timber profiles are matt lacquered 150-300 microns wet film thickness.

Construction

Frame Option 1: SCW+ curtain wall framing is constructed using mechanical methods at butt joints, assembled using stainless steel self-taping screws into integral screw ports extruded into the body of the sections, directly through square cut adjoining component parts. A proprietary sealant is used on all metal to metal joints and gasket to gasket joints during assembly in line with good practice.

Frame Option 2: SF52 curtain wall system utilises square cuts throughout and is joined using a specially designed cleat and spring pin within the zone drained system. A proprietary sealant is used on all metal to metal joints in line with good practice. All internal gaskets are designed to mate with injection moulded corner pieces and are sealed at joints.

Frame Option 3: Hybrid series 3 curtain wall is constructed using mechanical methods at butt joints. A proprietary sealant is used on all metal to metal joints during assemble in line with good practice.

Doors: Aluminium integrity doors are constructed with square cut components, mechanically jointed using self-taping screw into special cleats, and torsion bars are used for compressive strength. A proprietary sealant is used on all metal to metal joints in line with good practice.

Communal Security doors and Screens

The Aluminium Integrity System



Technical Data

Maximum door leaf sizes

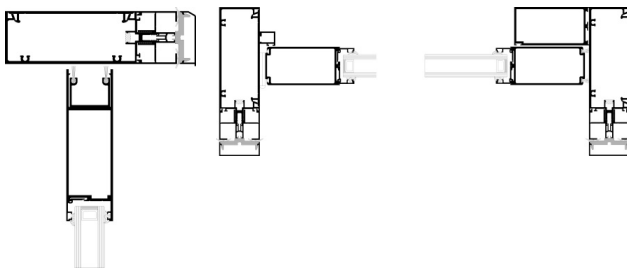
Door	Size (w x h)
AFT - Door	1113mm x 2216mm
CH - Door	1152mm x 2175mm

Glazing

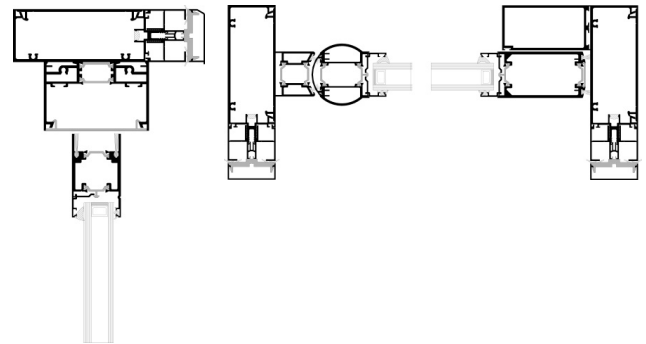
Thickness	6.8mm – 28mm
-----------	--------------

Cross Sections

Continuous Hinge (CH) option



Anti-Finger Trap (AFT) option



Specification.

Please contact our team for advice on product suitability, calculations and NBS or bespoke specifications.

Some data in this specification sheet is courtesy of Senior Architectural Systems. Soundcraft Doors and Windows work in partnership with Senior Architectural Systems.

Soundcraft, Orchard Building, Hewitts Road, Orpington, Kent. BR6 7QL

T: 01959 533778 E: sales@soundcraft-doors.co.uk www.soundcraft-doors.co.uk

Soundcraft is a trading name of JKR Services Ltd. Registered Office: Chandler & Georges, 75 Westow Hill, London SE19 1TX. Registered No: 2201723

